

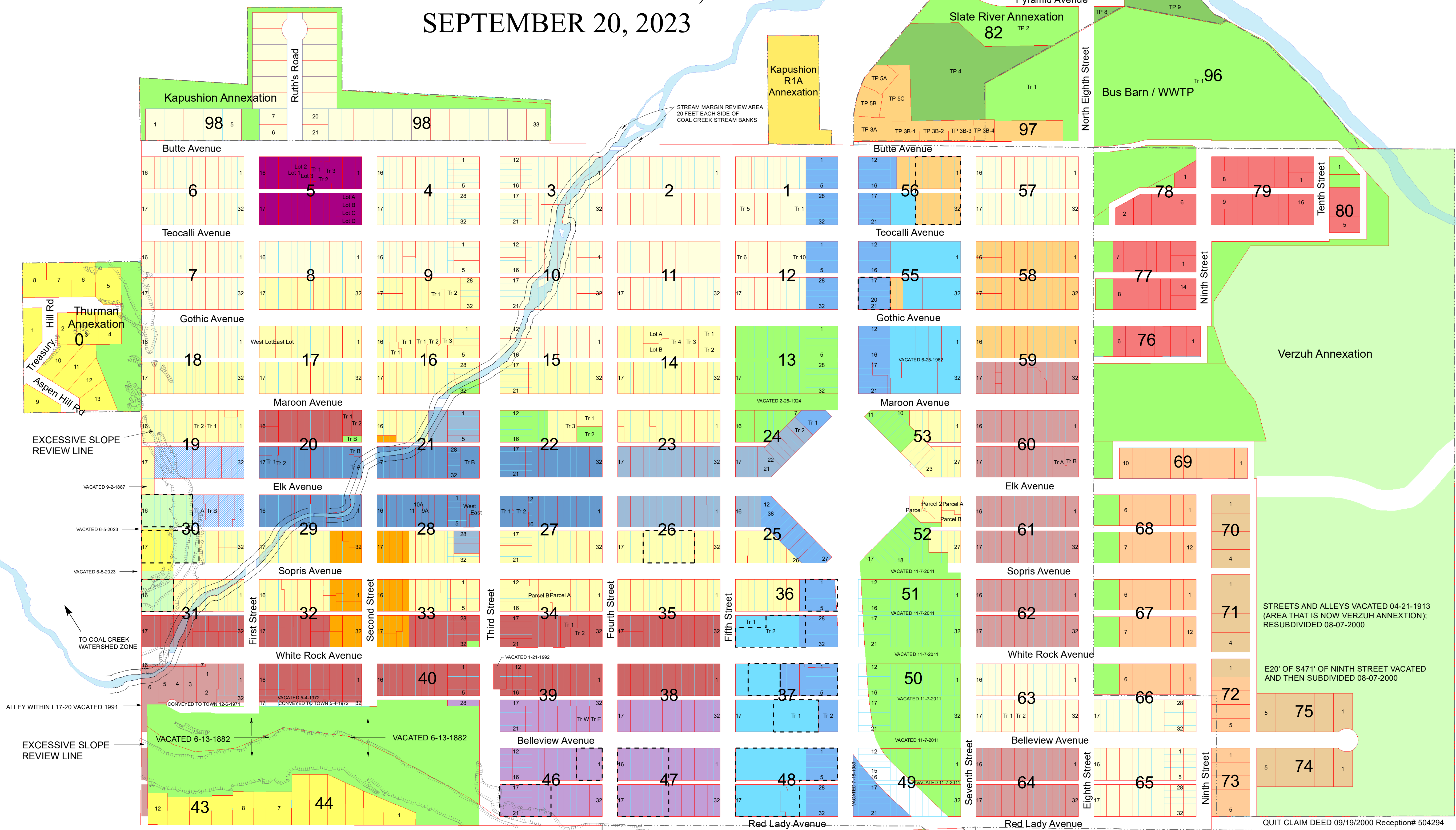
OFFICIAL ZONING MAP

TOWN OF CRESTED BUTTE, COLORADO

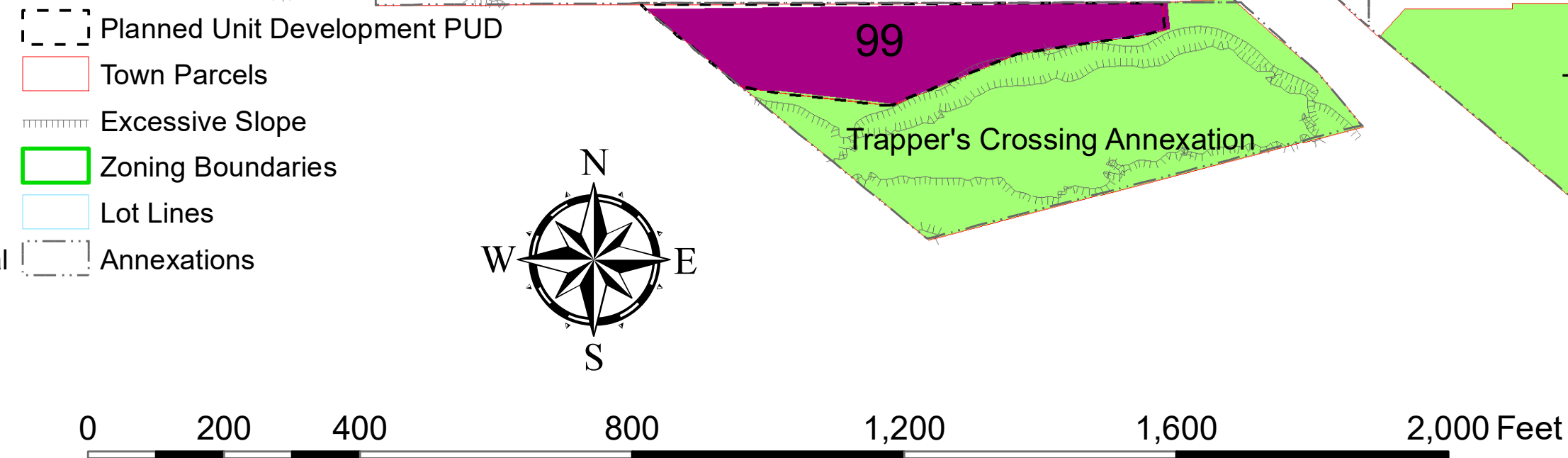
GUNNISON COUNTY T14S,R86W

SEPTEMBER 20, 2023

ZONING AMENDMENTS INCORPORATED		
Ordinance Number	Block(s) & Lot(s)	
NO. 16	SERIES 1979	ZONE DISTRICT AMENDMENTS
NO. 3	SERIES 1980	26 17-10-32
		55 22-23
NO. 8	SERIES 1980	NE 1/4 NW 1/4 OF SECTION 3 "T"
NO. 12	SERIES 1980	21 7-8
NO. 6	SERIES 1981	21 6
NO. 6	SERIES 1983	36 6, 27
NO. 13	SERIES 1984	21 14-16
NO. 15	SERIES 1984	56 11
NO. 17	SERIES 1985	DYER (S/2 SW/4 SEC35)
NO. 4	SERIES 1989	57 1-32
NO. 8	SERIES 1990	KAPUSHION R1A
NO. 9	SERIES 1990	37 6-7
NO. 20	SERIES 1990	TRAPPERS CROSSING
NO. 24	SERIES 1990	40 17-27, 29-32
		41 17-32
		42 18-32
		43 1-15, 18-32
		44 1-21, 31, 32
		45 1-32
NO. 29	SERIES 1990	43 18-32
		44 4-11, 17-32
		45 17-22
NO. 30	SERIES 1990	56 1-7, 26-32
NO. 8	SERIES 1991	THURMAN ANNEXATION
NO. 3	SERIES 1992	41 17-32, alley
		42 18-32
NO. 5	SERIES 1992	THURMAN ANNEXATION
NO. 15	SERIES 1992	52 4-7
NO. 4	SERIES 1993	53 9-18
		22 9-11
NO. 11	SERIES 1993	9-9 17-32
		14
		15 17-32
		16-17
		18 17-32
		19 1-24
		20 1-16
		21 1-4, 9-16
		22 1-11
		23 1-16
		25 17-26
		26-27 17-32
		28 17-27, 30-32
		29 17-32
		30 9-32
		31-35
		36 7-16
		38-40 1-16
		41 1-16 & N ^o 17-32
		52 1-7, 24-27
NO. 16	SERIES 1993	21 1-4
NO. 4	SERIES 1994	TRAPPERS CROSSING ANNEXATION (RED LADY ESTATES)
NO. 7	SERIES 1995	KAPUSHION ANNEXATION
NO. 8	SERIES 1995	KAPUSHION ANNEXATION
NO. 20	SERIES 1995	52 6-7
NO. 27-30	SERIES 1995	TOWN RANCH ANNEXATION
NO. 4	SERIES 1996	TRAPPERS CROSSING ANNEXATION
NO. 3	SERIES 1997	TOWN RANCH ANNEXATION
NO. 18	SERIES 1998	24 29
NO. 3	SERIES 1998	37 8-9
NO. 4	SERIES 1999	20 1-3
NO. 5	SERIES 1999	SW 1/4 SW 1/4 SEC 35, T14S R86W
NO. 4	SERIES 2000	52 23-25
NO. 15	SERIES 2000	VERZUH ANNEXATION
NO. 16	SERIES 2000	VERZUH ANNEXATION
NO. 17	SERIES 2000	72 3-5
		73
NO. 20	SERIES 2002	76 TRACTS 1-7
		77 TRACTS 1-14
		78 TRACTS 1-6
		79 TRACTS 1-16
		80 TRACTS 1-5
NO. 29	SERIES 2002	25 12
NO. 5	SERIES 2003	16 31, 32
		33 E50' 32
		40 N25' 21'-23
NO. 15	SERIES 2004	22 S62.5' 1-4
NO. 3	SERIES 2005	56 8-10
NO. 6	SERIES 2006	19 19-24
NO. 3	SERIES 2009	19 19-32
NO. 1	SERIES 2011	30 9-25
		31 12-16
NO. 3	SERIES 2011	40 N25' 17-20
		N25' 24-27
NO. 22	SERIES 2011	49-52 STREETS & ALLEYS
NO. 30	SERIES 2013	37 W50' 28-32
NO. 38	SERIES 2019	80 1
NO. 9, 10	SERIES 2020	SLATE RIVER ANNEXATION
NO. 24	SERIES 2020	30-31 AMENDMENT TO PUD
NO. 23	SERIES 2021	80 2
NO. 27	SERIES 2022	16 28-32
NO. 13	SERIES 2023	30 12-21
		31 12-16
NO. 18	SERIES 2023	SLATE RIVER SUBD. FILING NO. 3 LOT TP 3B-4

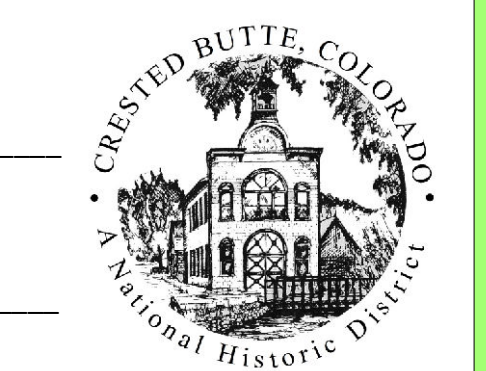


- R1 Residential
- R1A Residential
- R1B Residential
- R1C Residential/Core
- R1D Residential
- R1E Residential
- R1F Residential
- R2 Residential/Multi-Family
- R2A Residential/Multi-Family
- R2C Residential/Multi-Family/Core
- R3C Residential/Historic/Tourist/Core
- R4 Residential/Planned Unit Development
- T Tourist
- B1 Business Core
- B2 Business/Highway Related
- B3 Business/Historic Residential
- B4 West End Business/Historic Residential
- M Mobile Home
- C Commercial
- A-O Agriculture - Open District
- P Public
- P-OS Public - Open Space



By _____
Ian Billick, Mayor

ATTEST:
Lynelle Stanford, Town Clerk



NOTE: This map is not to be used for survey or legal description purposes